

Tactile Indicators - GMCPD60

Technical Data Sheet

Product Name	GMCPD60 Tactile Ground Surface Indicator	
Description	Concrete Paver directional tactile indicator, recommended for indoors and outdoors, commercial car parks, footpaths, shopping centres, hospitals, schools – any public spaces requiring accessibility treatment	
Freedom Works Code	GMCPD60	
Masterspec Code	Interior	6615FG
	Exterior	8281FG
Warranty	Product Warranty	2 years
Luminance Test	Provides colour contrast. Integrated TGSI must be 30% to that of the surround substrate surface area	

freedomworks.co.nz
sales@freedomworks.co.nz

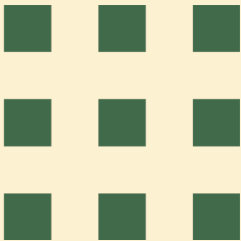
09 320 1338
0800 687 004

Scan to visit the webpage



Code Compliance	NZTA RTS14	Land Transport New Zealand – Guidelines for facilities for the blind and vision impaired
	AS/NZS 1428.4.2009	Design for access and mobility, Part 4
	NZS4121:2001	Design for access and mobility – building and associated facilities
	All slip resistance tests are done in accordance with AS/NZS4586:2004	
	Land Transport's Pedestrian Planning and Design Guide	
	The Royal N.Z. Foundation for the Blind Design Guide Recommendations/ Specifications	

Base Material	Minimum 50MPA high cement content giving it high compression strength, high density and very durable, low porosity giving high stain resistance	
Dimensions	Width	300mm
	Length	300mm
	Thickness	60mm
Colours	Safety Yellow, custom colours available upon request	
Features & Applications	Provides direction to the blind and visually impaired	
Slip Resistance Rating	WET and DRY	SRV Value of 80



Tactile Indicators - GMCPD60
Technical Drawings & Imagery

Side View	
Top View	
End View	
Product Image	

freedomworks.co.nz
sales@freedomworks.co.nz

09 320 1338
0800 687 004

Scan to visit the webpage

