

Tactile Indicators - GMPS1002

Technical Data Sheet

Product Name	GMPS1002 Tactile Ground Surface Indicator	
Description	Thermoplastic Polyurethane warning tactile indicator, recommended for indoors and outdoors, commercial car parks, footpaths, shopping centres, hospitals, schools – any public spaces requiring accessibility treatment	
Freedom Works Code	GMPS1002	
Masterspec Code	Interior	6615FG
	Exterior	8281FG
Warranties	Installation warranty	1 year
	Product Warranty	5 Years (interior), 2 years (exterior)
Luminance Test	Provides colour contrast. Composite Discrete Tactiles must be 45% to that of the surround substrate surface area	

freedomworks.co.nz
sales@freedomworks.co.nz

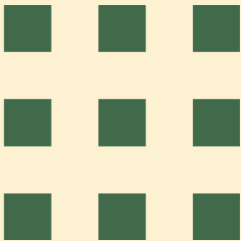
09 320 1338
0800 687 004

Scan to visit the webpage



Code Compliance	NZTA RTS14	Land Transport New Zealand – Guidelines for facilities for the blind and vision impaired
	AS/NZS 1428.4.2009	Design for access and mobility, Part 4
	NZS4121:2001	Design for access and mobility – building and associated facilities
	All slip resistance tests are done in accordance with AS/NZS4586:2004	
	Land Transport's Pedestrian Planning and Design Guide	
	The Royal N.Z. Foundation for the Blind Design Guide Recommendations/ Specifications	

Base Material	UV Stabilized Thermoplastic Polyurethane	
Dimensions	Outer	35mm
	Top	25mm
Colours	Safety yellow, Green, Black & Grey. Custom colours available upon request	
Features & Applications	Provides warning to the blind and visually impaired	
Installation Methods	Drill and Adhesive Fix or Drill and Friction Fit in accordance to New Zealand Standards	
Slip Resistance Rating	P4 WET and DRY	



Tactile Indicators - GMPS1002
Technical Drawings & Imagery

Side View	
Top View	

Product Image	
---------------	--

freedomworks.co.nz
sales@freedomworks.co.nz

09 320 1338
0800 687 004

Scan to visit the webpage

