

Tactile Indicators - GMPH4002 Technical Data Sheet

Product Name	GMPH4002 Tactile Ground Surface Indicator	
Description	Plain tile warning tactile indicator, recommended for indoors and outdoors, commercial carparks, footpaths, shopping centres, hospitals, schools – any public spaces requiring accessibility treatment	
Freedom Works Code	GMPH4002	
Masterspec Code	Interior	6615FG
	Exterior	8281FG
Warranties	Installation warranty	1 year
	Product Warranty	2 years (exterior)
Luminance Test	Provides colour contrast. Integrated TGSi must be 30% to that of the surround substrate surface area	

freedomworks.co.nz
sales@freedomworks.co.nz

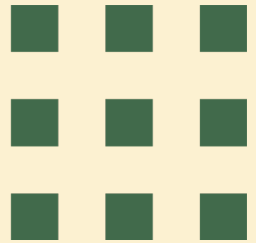
09 320 1338
0800 687 004

Scan to visit the webpage



Code Compliance	NZTA RTS14	Land Transport New Zealand – Guidelines for facilities for the blind and vision impaired
	AS/NZS 1428.4:2009	Design for access and mobility, Part 4
	NZS4121:2001	Design for access and mobility – building and associated facilities
	All slip resistance tests are done in accordance with AS/NZS4586:2004	
	Land Transport's Pedestrian Planning and Design Guide	
	The Royal N.Z. Foundation for the Blind Design Guide Recommendations/ Specifications	

Base Material	UV Resistant Thermoplastic Polyurethane	
Dimensions	Width	300mm
	Height	300mm
	Thickness	4.5mm
Colours	Safety yellow, Green, Black & Grey. Custom colours available upon request	
Features & Applications	Provides warning to the blind and visually impaired	
Installation Methods	Surface Fixed with Adhesive	
	Peel-and-stick	
Sustainability	Declare Label Certified	
	LBC Compliant	Red List Approved
Slip Resistance Rating	P4 WET and DRY	



Tactile Indicators - GMPH4002 Technical Drawings & Imagery

<p>Side View</p>	
<p>Top View</p>	
<p>End View</p>	

freedomworks.co.nz
sales@freedomworks.co.nz

09 320 1338
0800 687 004

Scan to visit the webpage



<p>Product Image</p>	
-----------------------------	--