

Tactile Indicators - GMSSD30

Technical Data Sheet

Product Name	GMSSD30 Tactile Ground Surface Directional Indicator	
Description	A Heavy Duty 316 Marine Grade Stainless Steel leading tactile indicator with Yellow Carborundum, recommended for indoors and outdoors, commercial carparks, footpaths, shopping centres, hospitals, schools – any public spaces requiring accessibility treatment	
Freedom Works Code	GMSSD30	
Masterspec Code	Interior	6615FG
	Exterior	8281FG
Warranties	Installation warranty	1 year
	Product Warranty	10 years
Luminance Test	Provides colour contrast. Composite Discrete Tactiles must be 60% to that of the surround substrate surface area	

freedomworks.co.nz
sales@freedomworks.co.nz

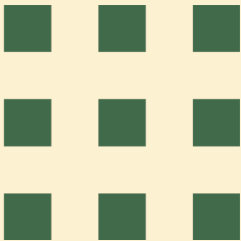
09 320 1338
0800 687 004

Scan to visit the webpage



Code Compliance	NZTA RTS14	Land Transport New Zealand – Guidelines for facilities for the blind and vision impaired
	AS/NZS 1428.4:2009	Design for access and mobility, Part 4
	NZS4121:2001	Design for access and mobility – building and associated facilities
	AS/NZS4586:2004	Achieve slip resistance test with average COF #70
	Land Transport's Pedestrian Planning and Design Guide	
	The Royal N.Z. Foundation for the Blind Design Guide Recommendations/ Specifications	

Base Material	Manufactured in 316 Marine Grade Stainless Steel with a high grip yellow abrasive carborundum center	
Dimensions	Length	285mm
	Width	35mm
	Height	5mm
Features & Applications	Provides direction to the blind and visually impaired	
Installation Methods	Drill and Adhesive Fix or Drill and Friction Fit in accordance to New Zealand Standards	
Sustainability	Declare Label Certified	
	LBC Compliant	Red List Approved
Slip Resistance Rating	P4 WET and DRY	SRV Value of 50



Tactile Indicators - GMSSD30
Technical Drawings & Imagery

Side View	
Top View	
End View	

Product Image	
---------------	--

freedomworks.co.nz
sales@freedomworks.co.nz

09 320 1338
0800 687 004

Scan to visit the webpage

