

## Tactile Indicators - GMSSS10

### Technical Data Sheet

<b>Product Name</b>	GMSSS10 Tactile Ground Surface Indicator	
<b>Description</b>	A Heavy duty 316 Marine Grade Stainless Steel warning tactile indicator, recommended for indoors and outdoors, commercial car parks, footpaths, shopping centres, hospitals, schools – any public spaces requiring accessibility treatment	
<b>Freedom Works Code</b>	GMPD1002	
<b>Masterspec Code</b>	Interior	6615FG
	Exterior	8281FG
<b>Warranties</b>	Installation warranty	1 year
	Product Warranty	10 Years
<b>Luminance Test</b>	Provides colour contrast. Composite Discrete Tactiles must be 45% to that of the surround substrate surface area	

freedomworks.co.nz  
sales@freedomworks.co.nz

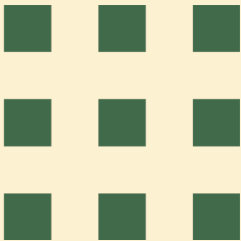
09 320 1338  
0800 687 004

Scan to visit the webpage



<b>Code Compliance</b>	NZTA RTS14	Land Transport New Zealand – Guidelines for facilities for the blind and vision impaired
	AS/NZS 1428.4:2009	Design for access and mobility, Part 4
	NZS4121:2001	Design for access and mobility – building and associated facilities
	All slip resistance tests are done in accordance with AS/NZS4586:2004	
	Land Transport's Pedestrian Planning and Design Guide	
	The Royal N.Z. Foundation for the Blind Design Guide Recommendations/ Specifications	

<b>Base Material</b>	Solid 316 Marine Grade Stainless Steel	
<b>Composite Material</b>	High grip black abrasive carborundum centre	
<b>Dimensions</b>	Outer	35mm
	Top	25mm
<b>Features &amp; Applications</b>	Provides direction to the blind and visually impaired	
<b>Installation Methods</b>	Drill and Adhesive Fix or Drill and Friction Fit in accordance to New Zealand Standards	
<b>Sustainability</b>	Declare Label Certified	
	LBC Compliant	Red List Approved
<b>Slip Resistance Rating</b>	P5 WET and DRY	SRV Value of 80



Tactile Indicators - GMSSS10  
Technical Drawings & Imagery

Side View	
Top View	

Product Image	
---------------	--

[freedomworks.co.nz](https://freedomworks.co.nz)  
[sales@freedomworks.co.nz](mailto:sales@freedomworks.co.nz)

09 320 1338  
0800 687 004

Scan to visit the webpage

