



# HMSSB120FT

## *Haltmaster Yellow Powder Coated Bollard*

HMSSB120FT Heavy Duty Haltmaster Bollards – Stainless Steel Square Bollard, recommended for installation on Back and Front of House, Service Areas, Hotel and Hospitality Sector, Health Care Sector, Consumer Staple Sector, Civil Sector, Transport Sector and Carparks.



### SPECIFICATIONS

<b>Masterspec Code</b>	Interior: 8262HM
<b>Warranties</b>	<b>Installation warranty:</b> 1 year <b>Product warranty:</b> 10 years
<b>Code Compliance</b>	<b>NZ Transport Agency Traffic Control Devices Manual (TCD Manual)</b> - standard requirements for the design, installation, and use of traffic control devices on New Zealand roads.  <b>AS/NZS 2890:1:2004</b> - Parking facilities  <b>AS/NZS 3845:1999</b> - Road safety barrier systems

<b>Material</b>	316 Marine Grade Stainless Steel - Heavy Duty Safety Bollard
<b>Finish</b>	Brushed Stainless Steel
<b>Dimensions</b>	<b>Width:</b> 100 mm <b>Height:</b> 900 mm <b>Base Plate:</b> 240mm x 240mm
<b>Features</b>	Solid Steel base plate
<b>Installation Methods</b>	Surface Mounted with mechanical fixing / 4 No 180mm x 12mm Tru Bolts
<b>Optional Features</b>	Red Reflective Tape Yellow Reflective Tape





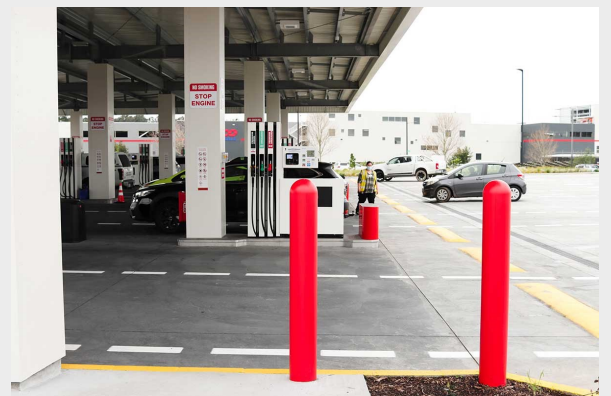
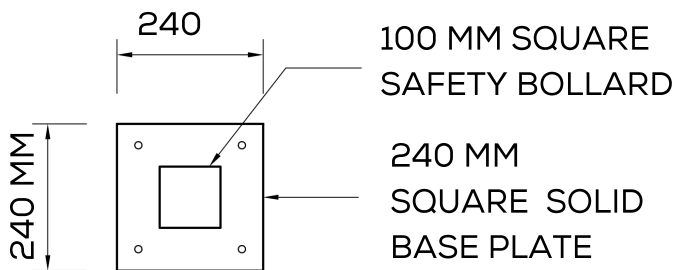
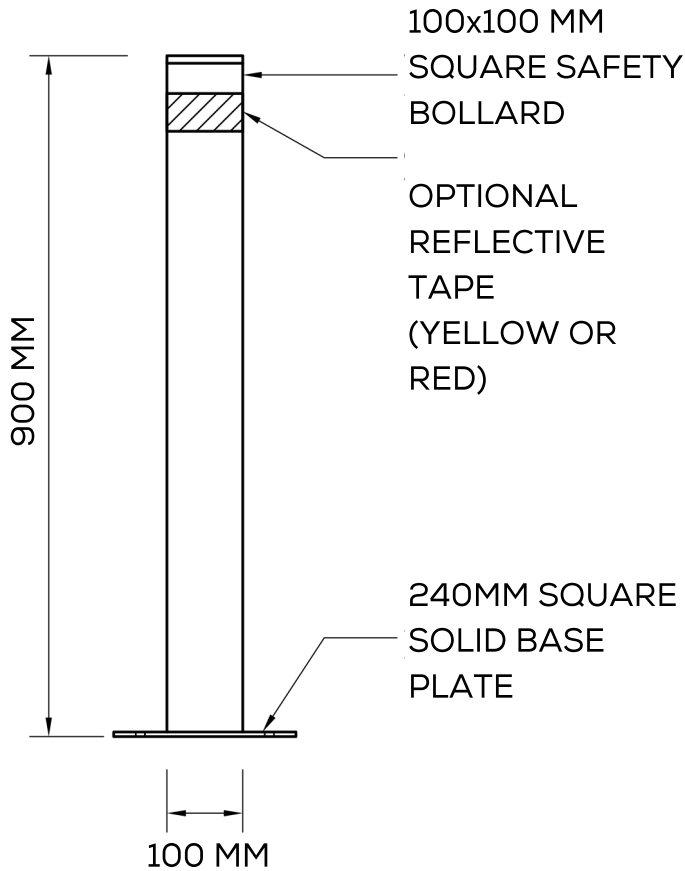
# HALTMASTER<sup>®</sup>

## TRAFFIC MANAGEMENT



### PRODUCT TECHNICAL DRAWING

### PREVIOUS PROJECTS



8 Cooper Street, Havelock North 4130  
PO Box 8740, Havelock North 4130

Unit 2, 24 Inlet Road, Takanini  
Auckland 2112

09 320 1338 or Toll Free 0800 687 004

ARCHITECTURAL PRODUCTS

**TREADMASTER<sup>®</sup>**  
ENTRANCE MATTING

**GUIDEMASTER<sup>®</sup>**  
TACTILE INDICATORS

**STEPMASTER<sup>®</sup>**  
STAIR NOSINGS

**STRIDEMASTER<sup>®</sup>**  
WALKWAY INSERTS

**HALTMASTER<sup>®</sup>**  
TRAFFIC MANAGEMENT

Page 2

